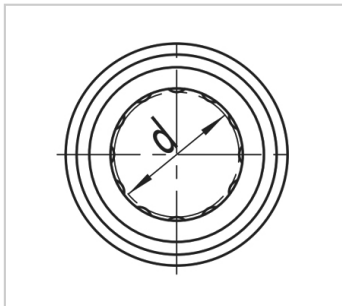
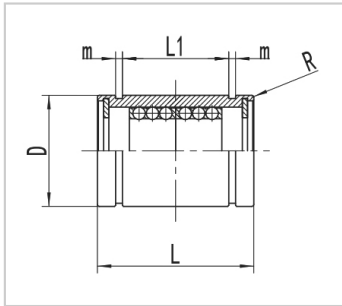


Linear bearing flange

ST-L series-**ST12L**

参数信息:



Aluminum alloy retainer :	ST12L
Main dimensions and tolerances (mm) :	
dr :	-
tolerance :	0~-0.009
D :	21
tolerance :	0~-0.013
L :	30
tolerance :	0~-0.2
Main dimensions and tolerances (mm) flange :	
L1 :	20.4
m :	1.3
r :	0.8
Maximum travel distance (um) :	8
Number of ball columns :	6
Rated load :	
C(N) :	1145
Co(N) :	1155
Weight (g) :	36

: