

National standard linear bearings

LM-L series-**LM60LLM60LUU**

参数信息:

Bearing No. :

Standard type : LM60L

Sealed type : LM60LU
U

Number of steel balls : 6

Weight (g) : 3500

NominalShaftdiameter
(mm) :

dr : 60

tolerance : 0/-0.020

Main dimensions and
tolerances (mm) :

D : 90

tolerance : 0/-0.025

L : 211

tolerance : 0/-0.4

B : 170

tolerance : 0/-0.4

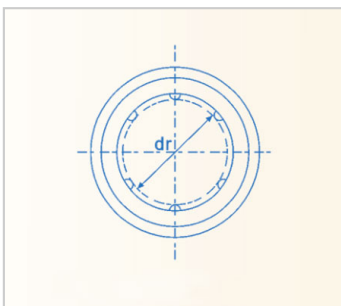
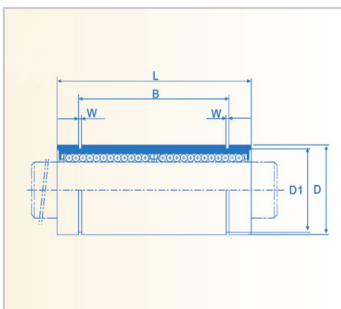
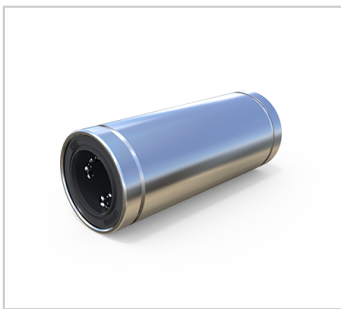
W : 3.15

D1 : 86.5

Eccentricity (max) μ
M : 30

Rated load C (n) : 7650

Rated load CO (n) : 20000



:

