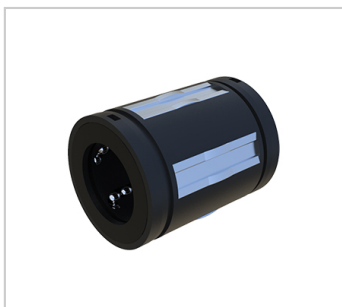
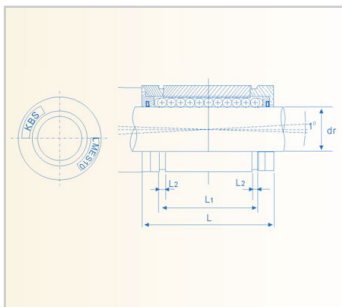


Super adjustable linear bearing

LMES series-LMES10LMES10UU

参数信息:



Shaft diameter (mm) : 10

model :

No seal :	LMES10
seal up :	LMES10U U

Number of ball columns :	5
--------------------------	---

Weight (g) :	17
--------------	----

Size (mm) :

D1 :	19
L ± 0.2 :	29
L1 ± 0.2 :	21.7
L2 min :	1.35

Inner circle diameter :

Diameter (mm) :	10
Tolerance ( μ m) :	+8/0

Basic rated load :

Dynamic load C (N) :	750
Static load Co (N) :	550

: